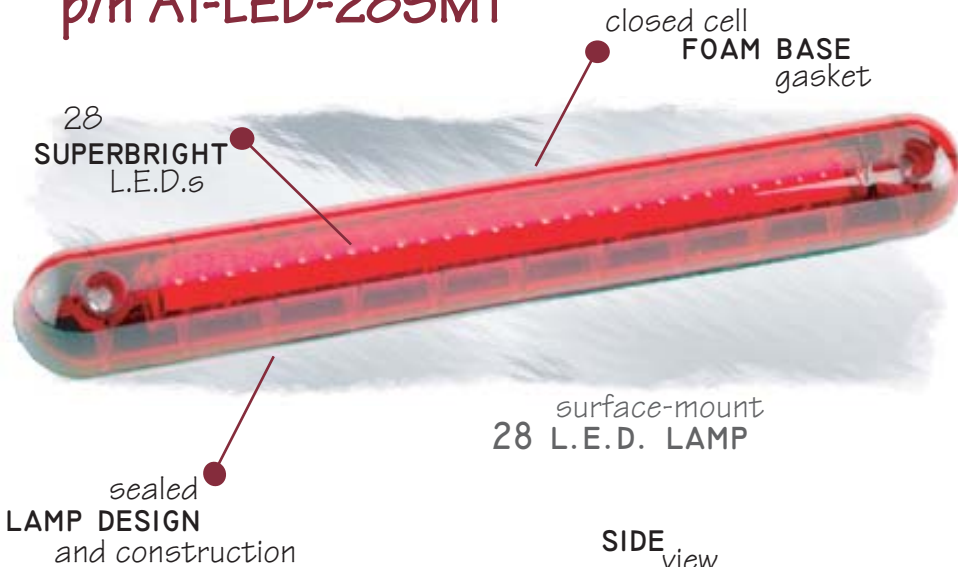




Look at American Technology... See the Difference.

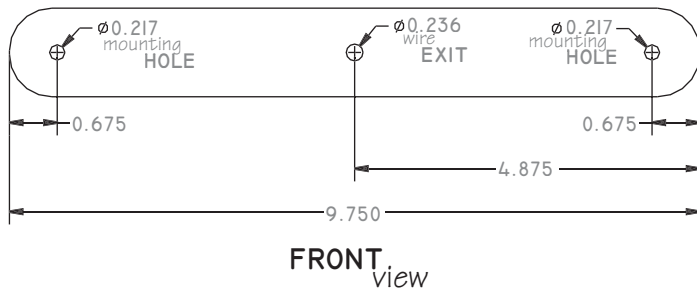
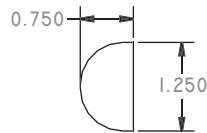
CENTER HIGH MOUNT STOP LAMP

p/n AT-LED-28SMT



surface-mount
28 L.E.D. LAMP

SIDE
view



This surface-mount low profile L.E.D. lamp can be used for multiple applications, including commercial utility toppers, cargo trailers, recreational trailers and vehicles - and more!

Lamp features include:

- .750" Low profile surface mount lamp, no mounting hole required.
- 28 superbright L.E.D.s exceed S.A.E. requirements.
- Sealed lamp design and construction. Closed cell foam base gasket.
- Dual mounting holes for positive installation.
- Amp pins pre terminated on wire leads for locking Amp connectors.

CALL US TODAY WITH YOUR
APPLICATION!

SPECIFICATIONS

voltage
amperage (typical)
ratings & approvals
material

13.8V DC NOMINAL (9 - 15V DC)
.181AMPS @ 13.8V DC
S.A.E. U 99
HIGH IMPACT POLYCARBONATE LENS

V-Sales Company
2016 Borneman Ave.
Elkhart, Indiana 46517
Toll-free: 800-528-7953
www.v-sales.com